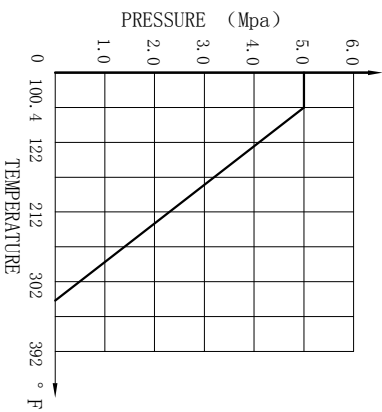
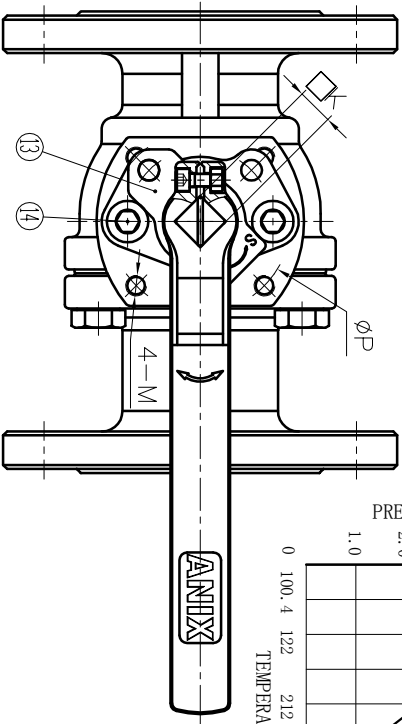
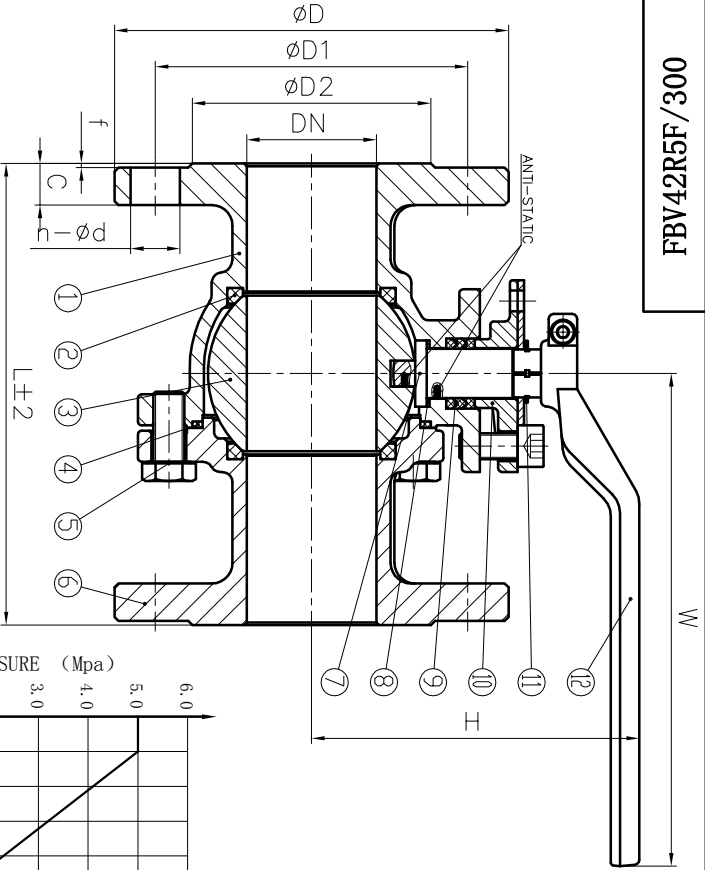


00C / J5R2R5F / 300

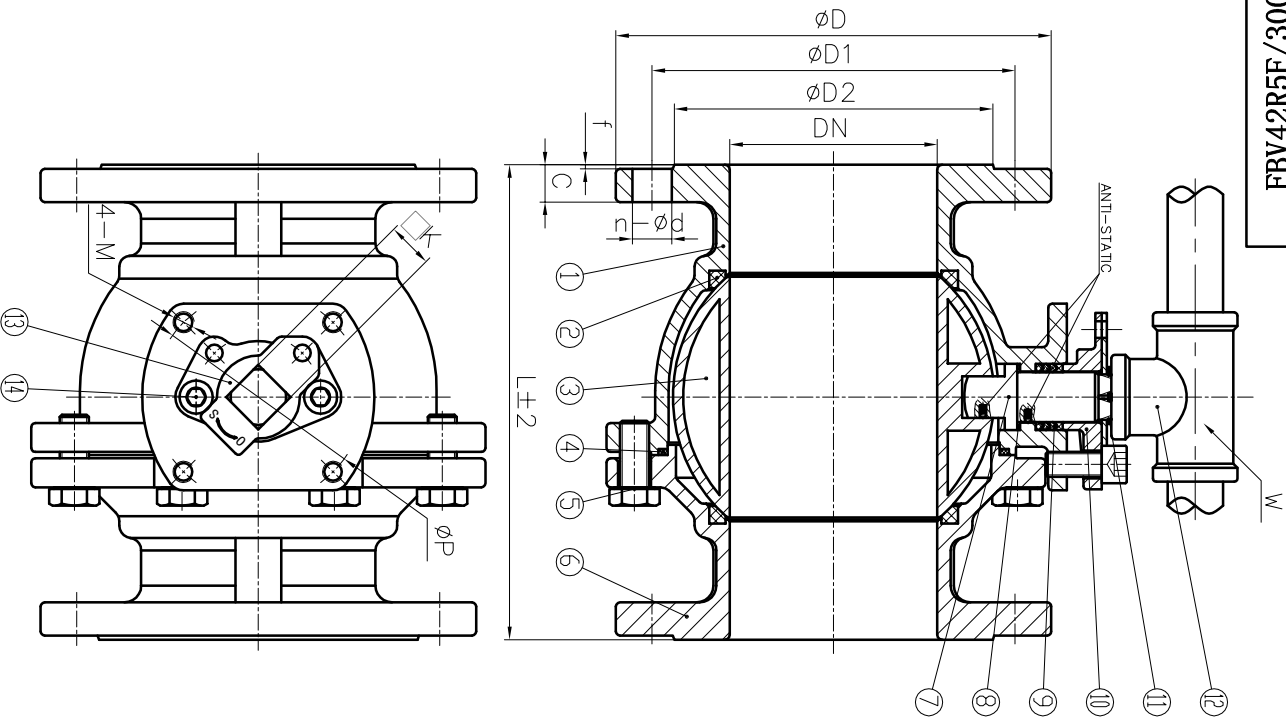


NPS	L	D	D1	D2	C	F	n-Ød	W	H	K	P	M	Weight (lb)
1/2"	5.512	3.740	2.626	1.374	0.591	0.063	4-Ø0.63	5.118	3.268	0.354	1.654	MO.197	4.409
3/4"	5.984	4.528	3.252	1.689	0.630	0.063	4-Ø0.748	5.118	3.504	0.354	1.654	MO.197	7.165
1"	6.496	4.921	3.500	2.000	0.709	0.063	4-Ø0.748	6.299	3.661	0.433	1.969	MO.236	8.818
1 1/4"	7.008	5.315	3.874	2.500	0.748	0.063	4-Ø0.748	6.299	3.819	0.433	1.969	MO.236	13.228
1 1/2"	7.480	6.102	4.500	2.874	0.827	0.063	4-Ø0.866	7.874	4.685	0.551	2.756	MO.315	17.637
2"	8.504	6.496	5.000	3.626	0.906	0.063	8-Ø0.748	7.874	5.000	0.551	2.756	MO.315	24.251
2 1/2"	9.488	7.480	5.874	4.126	1.024	0.063	8-Ø0.866	9.449	5.433	0.551	2.756	MO.315	33.069
3"	11.102	8.268	6.626	5.000	1.142	0.063	8-Ø0.866	10.630	6.614	0.669	4.016	MO.394	47.399
4"	12.008	10.039	7.874	6.189	1.260	0.063	8-Ø0.866	12.598	7.480	0.669	4.016	MO.394	74.957

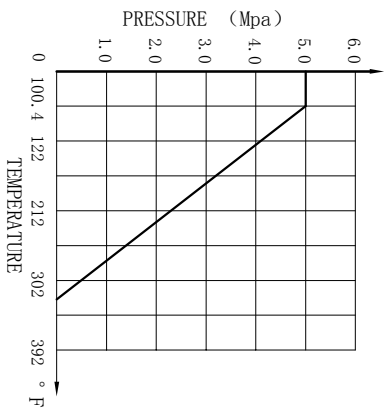
Nominal pressure				300LB			
Test pressure	Shell test	7.5	test medium	water	Test temperature	normal temperature	
	seal test	5.5		air			
	Gas seal test	0.6					
Applicable medium				water, oil, gas			
Applicable temperature				-20~356°F			

- NOTE:**
1. Design and Manufacture for valve according to ANSI B16.34-2009.
 2. Face-to-face dimensions for valve according to ASME B16.10-2009.
 3. End flange dimensions for valve according to ASME B16.5-2009.
 4. Inspection and Test for valve according to API 598-2009.

NO.	DESCRIPTION	Q'TY	MATERIAL
14	HEXAGON HEAD BOLT	2	A193 B8
13	STOPPER	1	SS304
12	HANDLE	1	STAINLESS STEEL
11	SNAP RING	1	SS304
10	GLAND	1	A351 CF8
9	PACKING	-	Graphite
8	STEM WASHER	1	RPTFE
7	STEM	1	A276 316
6	BONNET	1	A216 WCB
5	BOLT	-	A193 B8
4	GASKET	1	SS+Graphite
3	BALL	1	SS316
2	SEAT	2	RPTFE
1	BODY	1	A216 WCB
NO.	DESCRIPTION	Q'TY	MATERIAL
MARK		BEFORE MODIFIED	AFTER MODIFIED
DRA.		APP.	DATE
CHK.		DATE	SCALE
ANIX VALVE USA			Flange Ball Valve
300LB, WCB, Fire Safe			FBV42R5F/300



- NOTE:
1. Design and Manufacture for valve according to ANSI B16.34-2009.
 2. Face-to-face dimensions for valve according to ASME B16.10-2009.
 3. End flange dimensions for valve according to ASME B16.5-2009.
 4. Inspection and Test for valve according to API 598-2009.



Nominal pressure		300LB	
Test pressure	Shell test	7.5	water
	Test seal test	5.5	
Gas seal test	Gas seal	0.6	air
	Test seal	0.6	normal temperature
Applicable medium	water, oil, gas		
Applicable temperature	-20~356°F		

NPS	L	D	D1	D2	C	f	n-Ød	W	K	P	M	Weight (lb)	
5"	15.000	11.024	9.252	7.311	1.378	0.063	8-Ø0.866	21.654	0.827	4.016	M0.394	-	
6"	15.866	12.598	10.626	8.500	1.457	0.063	12-Ø0.866	25.591	0.827	4.921	M0.472	-	
8"	19.764	14.961	13.000	10.626	1.654	0.063	12-Ø0.984	31.496	1.063	5.512	M0.630	-	
14	HEXAGON HEAD BOLT												
13	STOPPER												
12	HANDLE												
11	SNAP RING												
10	GLAND												
9	PACKING												
8	STEM WASHER												
7	STEM												
6	BONNET												
5	BOLT												
4	GASKET												
3	BALL												
2	SEAT												
1	BODY												
NO.	DESCRIPTION											Q'TY	MATERIAL
ANIX®													
ANIX VALVE USA													
Flange Ball Valve													
300LB, WCB, Fire Safe													
FBV42R5F/300													